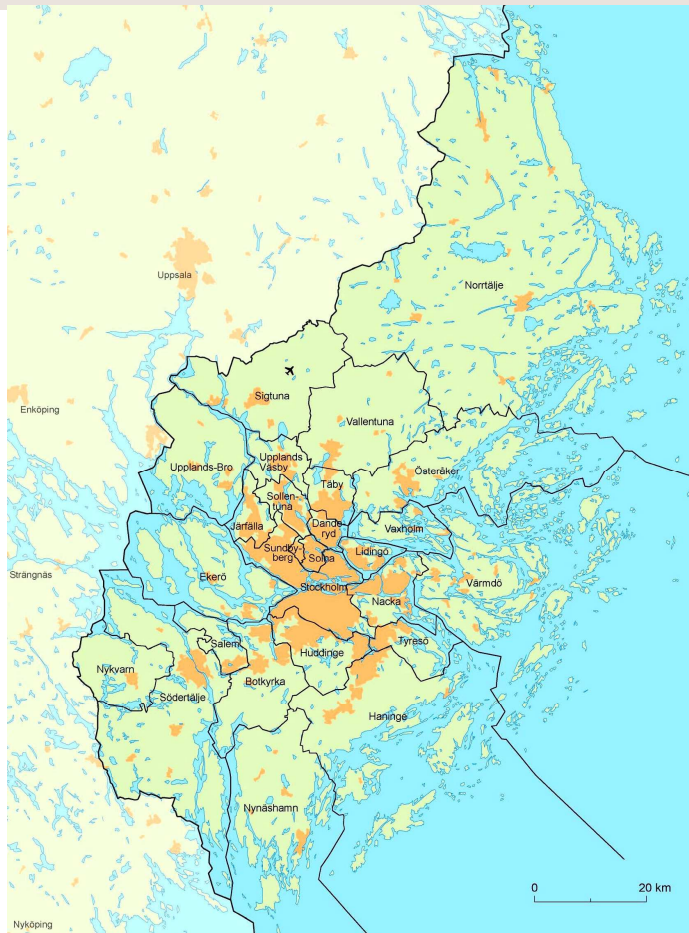


TEN-T in a Stockholm County context

- March 2018. Positive news from the Swedish government about stand behind and apply for the extending of the Scan-Med corridor
- Both suggested extending's
 - Stockholm-Swedish/Finnish border and further
 - Stockholm-Örebro-Oslo
- Are of huge importance for regional, national and transnational development
- We are looking forward to a deeper cooperation and work which will benefit us all





One county – 26 Municipalities

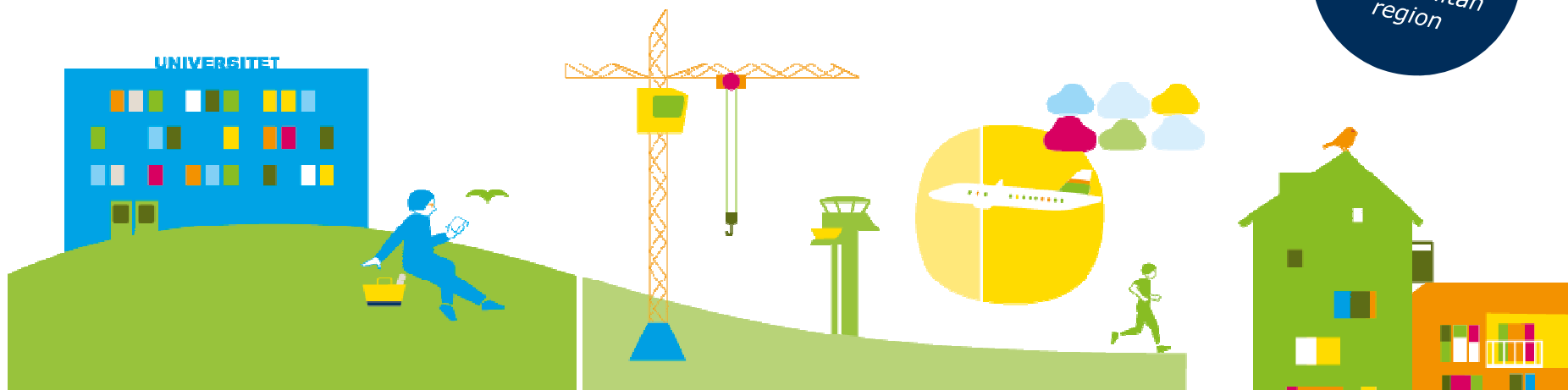
- 2,23 million inhabitants
- 1 million dwellings
- 6500 km², 180 km North to south
- The biggest municipality is Stockholm, approximately 950 000 inhabitants
- Annual county population growth approximately 35 000 at present
- Population density:
 - County 343 inhabitants/km²
 - Stockholm municipality 4 461 inhabitants/km²
- A monocentric region, large rural areas (60% forest & agriculture)
- Good public transport
- A unique system of regional greens wedges, and a rich blue system



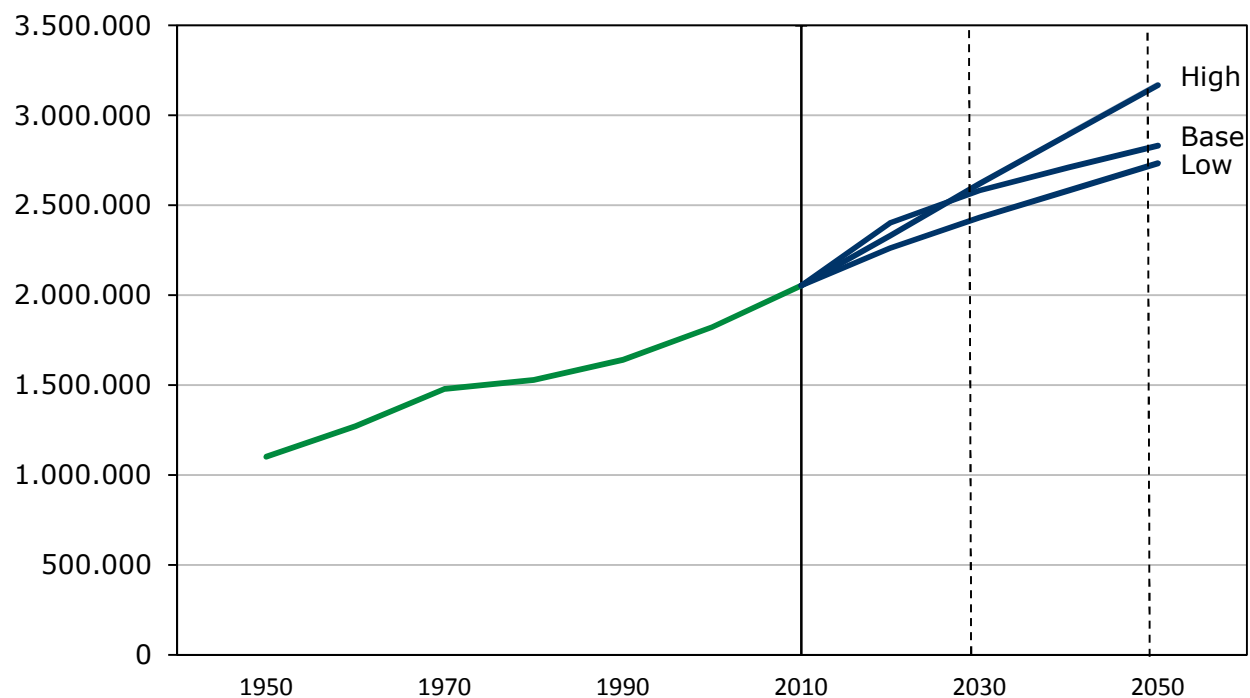
RUFS 2050

Regional Development Plan for Stockholm region

*Europe's most
attractive
metropolitan
region*

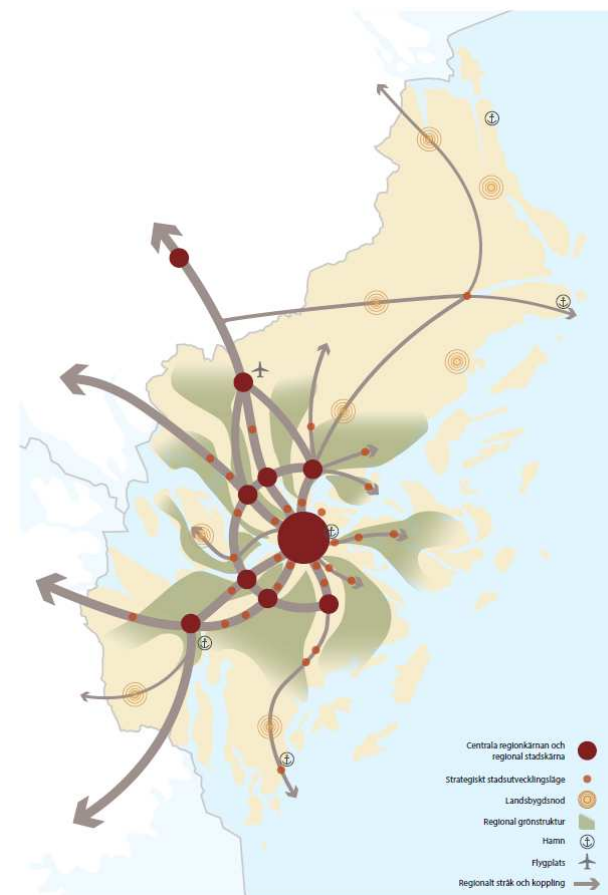


Population in the Stockholm region 1950-2010 and projections according to different scenarios 2010-2050



Spatial orientation towards 2050

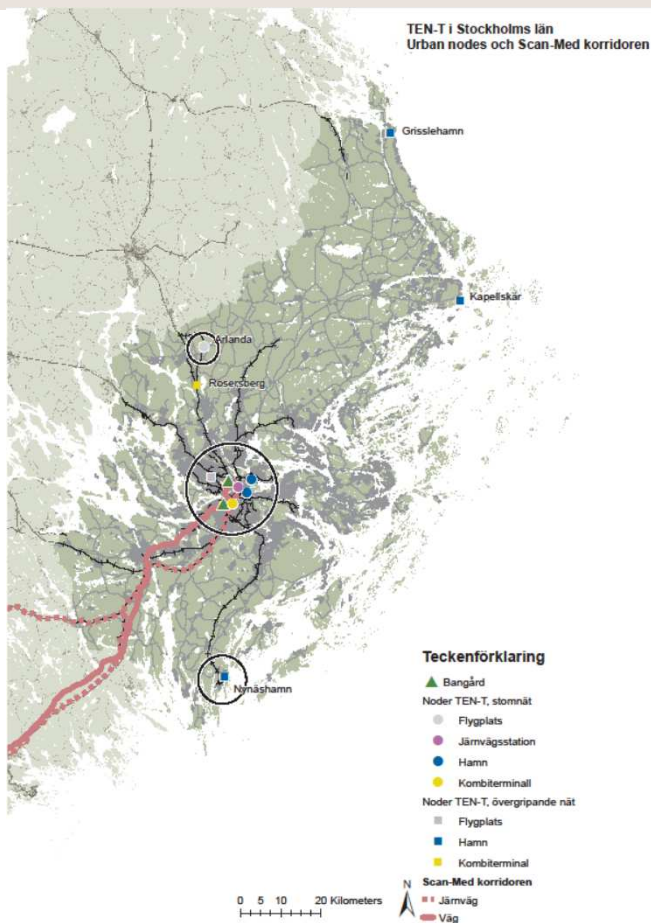
- Public transportation near urban development
- Linked regional city centers
- Resource-efficient systems for people and goods
- Cohesive green structure and robust aquatic environment
- Stronger links between city and country
- Accessible innovation, business and decision-making environments



The regional freight and logistics structure

- Important combiterminals
- Prioritize distribution centers in central locations
- Prioritize logistics centers in peripheral locations
- Good accessibility to ports and terminals





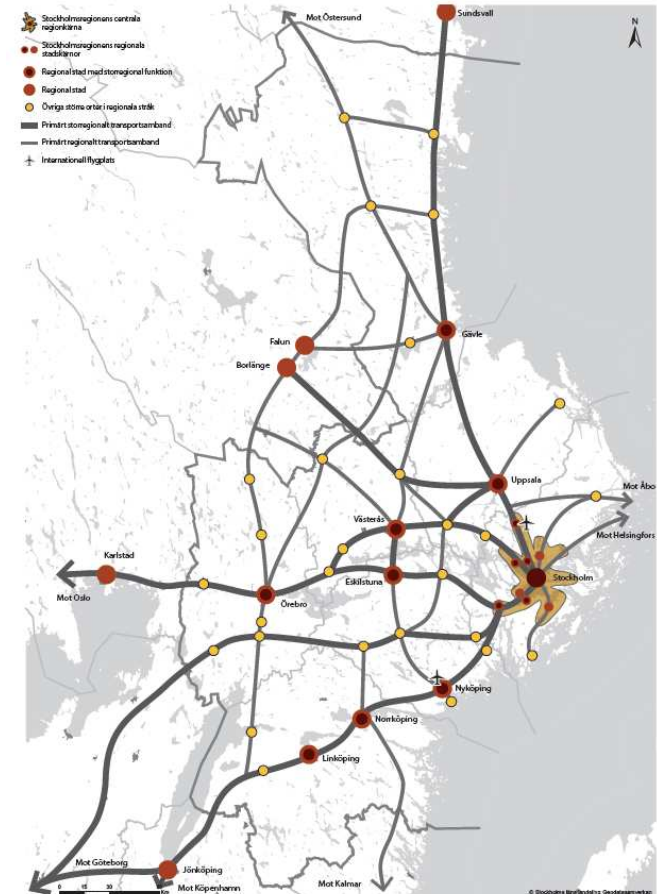
Regional challenges

- To create and secure an efficient and sustainable goods distribution for a region growing rapidly fast
 - Clean transport is highly prioritized
- Congestions for the road and railway systems
- To secure last-mile links
- To secure a and develop a sustainable catchment for Arlanda Airport
- To develop conditions for regional commuting



Greater regional approach

- Integrate work, education and housing markets
- Work for a concentrated, dense and cohesive settlement in the best public transport modes
- Link the big-regional node cities with Stockholm and with each other through cross-connections
- Strengthen greater regional connections with Oslo, Malmö/Copenhagen and Helsinki



Thank you for listening!

bosse.andersson@centerpartiet.se

